

# ActualtestsIT

ActualtestsIT

HOME

ALL VENDORS

★ GUARANTEE

? FAQ

TESTIMONIALS

CART (0)



Try **PDF Demo** before you buy

Online Test Engine: Online Tool, Convenient, easy to study. Instant Online Access. Supports All Web Browsers.

PDF format: Easy to read and print learning materials, our products are available in PDF file format.

Desktop Test Engine: Installable Software Application. Simulates Real Exam Environment. Practice Offline Anytime.

Select a vendor...

Select an test...

Your email address

Free Download Demo

## Instant Download



After Payment, our system will send you the products you purchase in mailbox in a minute after payment. If not received within 2 hours, please contact us.

## 365 Days Free Updates



Free update is available within 365 days after your purchase. After 365 days, you will get 50% discounts for updating.



## Money Back Guarantee

Full refund if you fail the corresponding exam in 60 days after purchasing. And Free get any another product.



## Security & Privacy

We respect customer privacy. We use McAfee's security service to provide you with utmost security for your personal information & peace of mind.

<http://www.actualtestsit.com/>

Topping Certification Exam Prep, Test Dumps Materials - ActualTestsIT

**Exam** : **C-THR85-2311**

**Title** : SAP Certified Application  
Associate - SAP SuccessFactors  
Succession Management  
2H/2023

**Vendor** : SAP

**Version** : DEMO

**NO.1** Which of the following are examples of available filter options for the matrix grid reports?Note: There are 2 correct answers to this question.

- A. Custom fields, from custom01 to custom15
- B. Department
- C. userinfo-element with matrix-filter="true"
- D. impactOfLoss

**Answer:** A B

**NO.2** Where are the Lineage Chart V12 icons configured?

- A. Admin Center Succession Settings
- B. Admin Center Matrix grid icon configuration
- C. Provisioning Edit Org Chart configuration
- D. Provisioning Edit Matrix Grid Classifier configuration

**Answer:** B

**NO.3** Your customer wants to change the order of the Risk of Loss and Impact of Loss fields in People Profile.What do you do?

- A. Change the order of the fields in the Succession Data Model.
- B. Change the order using the arrows in Configure People Profile.
- C. Change the order in Matrix grid report icon configuration.
- D. Change the order of the fields in the Edit Org Chart configuration.

**Answer:** B

**NO.4** When do the end users see the default search fields in the Talent Search?Note: There are 2 correct answers to this question.

- A. When they use the Start Over option
- B. When they add users to pools from Talent Search
- C. When they use the Nominate option
- D. When they go to the Talent Search for the first time

**Answer:** B D

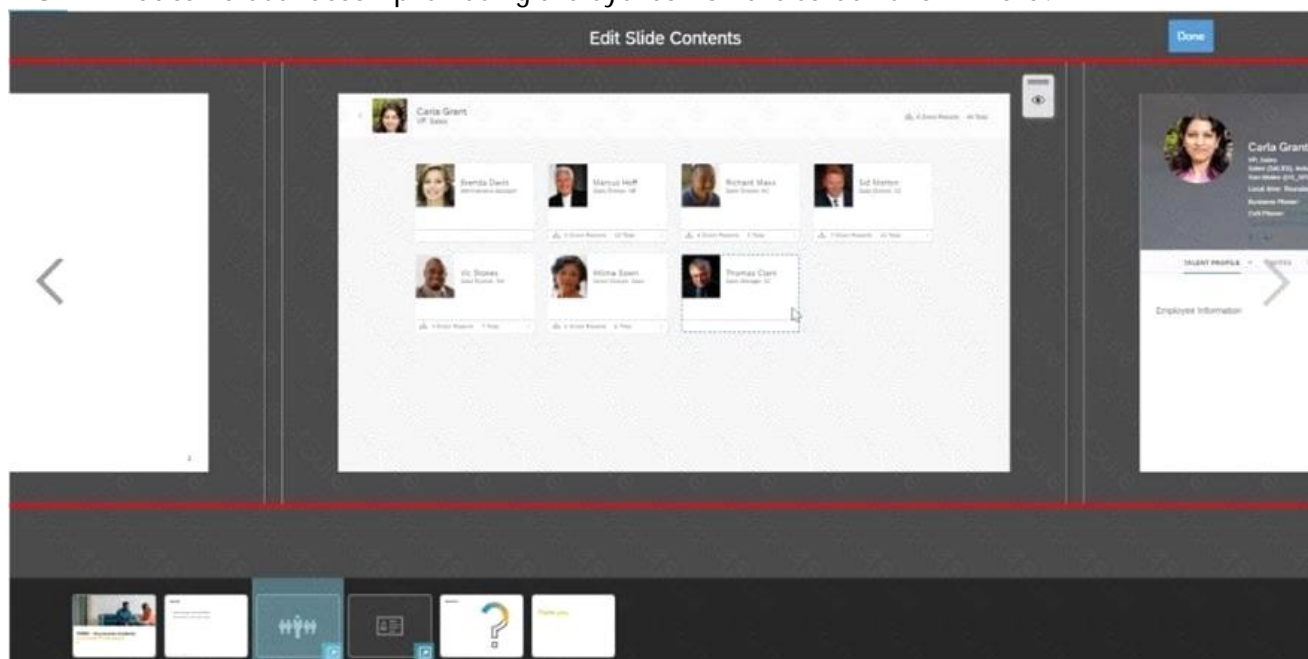
**NO.5** Which of the following features are available when you import background data using the Import Extended User Information feature?Note: There are 2 correct answers to this question.

- A. The data can include many to one data.
- B. The data can include a date field.
- C. The data CANNOT include a user ID.
- D. The import file includes multiple sections of data.

**Answer:** B D

**NO.6** Where can you import ratings for the trend elements?

- A. Import Employee Data
- B. Import Foundation Data
- C. Import Extended User Information

**D. Import and Export Data****Answer:** C**NO.7** What can a user accomplish using the eye icon on the screen shown here?

Note: There are 2 correct answers to this question.

- A. Show or hide the slide.
- B. Show or hide hotspots.
- C. Show or hide all direct reports.
- D. Show or hide one or more direct reports.

**Answer:** C D**NO.8** What trend background elements are available to use on the matrix grid report? Note: There are 2 correct answers to this question.

- A. sysScoreCardPerfHistoryPortlet
- B. sysOverallCustom1
- C. sysScoreCardSuccessorPortlet
- D. sysOverallCompetency

**Answer:** B D